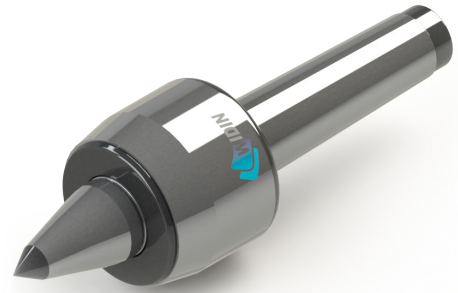
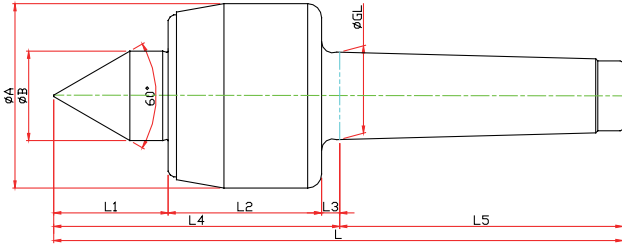


NCBC-TYPE

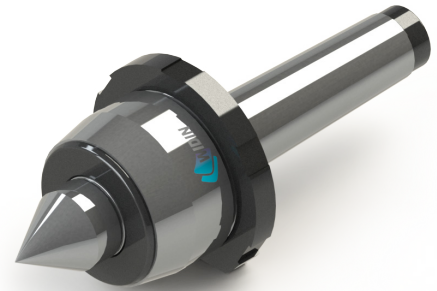
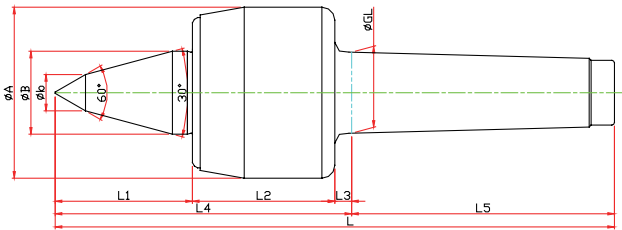
- ※ SHAFT 확장(바이트 간섭 최소화) SHAFT EXTENTION(Minimize the bite-interference)
- ※ 초경타입 Carbide Type



Model	Order Number	Morse Taper	Dimension										Weight MAX.	R.P.M MAX.	Run Out
			GL	A	B	L1	L2	L3	L4	L5	C	L			
LC-3NCBC	011102	NO.3	23,825	50	22	47	45	5	97	81	10	178	280	4800	0,003
LC-4NCBC	011103	NO.4	31,267	66	32	53	55	6.5	114.5	101.5	14	216	510	3800	0,003
LC-5NCBC	011104	NO.5	44,399	82	40	65	65	6.5	136.5	129.5	16	266	750	3400	0,005
LC-6NCBC	011105	NO.6	63,384	105	45	78	80	8	166	182	18	348	940	3000	0,005

NCN-TYPE

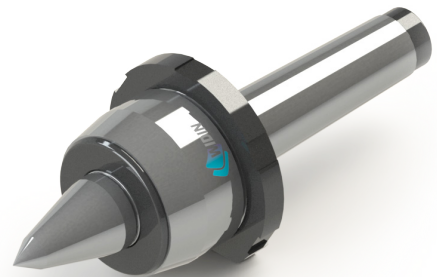
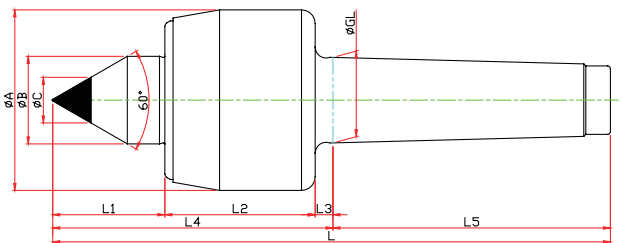
- ※ 너트타입 Nut Type



Model	Order Number	Morse Taper	Dimension										Weight MAX.	R.P.M MAX.	Run Out
			GL	A	B	L1	L2	L3	L4	L5	N	L			
LC-3NCN	010013	NO.3	23,825	50	22	27	45	5	77	81	70	158	630	4800	0,003
LC-4NCN	010014	NO.4	31,267	66	32	41	55	6.5	102.5	101.5	85	204	1100	3800	0,003
LC-5NCN	010015	NO.5	44,399	82	40	50	65	6.5	121.5	129.5	105	251	1600	3400	0,005
LC-6NCN	010016	NO.6	63,384	105	45	54	80	8	142	182	130	324	2100	3000	0,005

NCBN-TYPE

- ※ SHAFT 확장(바이트 간섭 최소화) SHAFT EXTENTION(Minimize the bite-interference)
- ※ 너트타입 Nut Type



Model	Order Number	Morse Taper	Dimension											Weight MAX.	R.P.M MAX.	Run Out
			GL	A	B	b	L1	L2	L3	L4	L5	N	L			
LC-3NCBN	011013	NO.3	23,825	50	22	10	47	45	5	97	81	70	178	280	4800	0,003
LC-4NCBN	011014	NO.4	31,267	66	32	14	53	55	6.5	114.5	101.5	85	216	510	3800	0,003
LC-5NCBN	011015	NO.5	44,399	82	40	16	65	65	6.5	136.5	129.5	105	266	750	3400	0,005
LC-6NCBN	011016	NO.6	63,384	105	45	18	78	80	8	166	182	130	348	940	3000	0,005